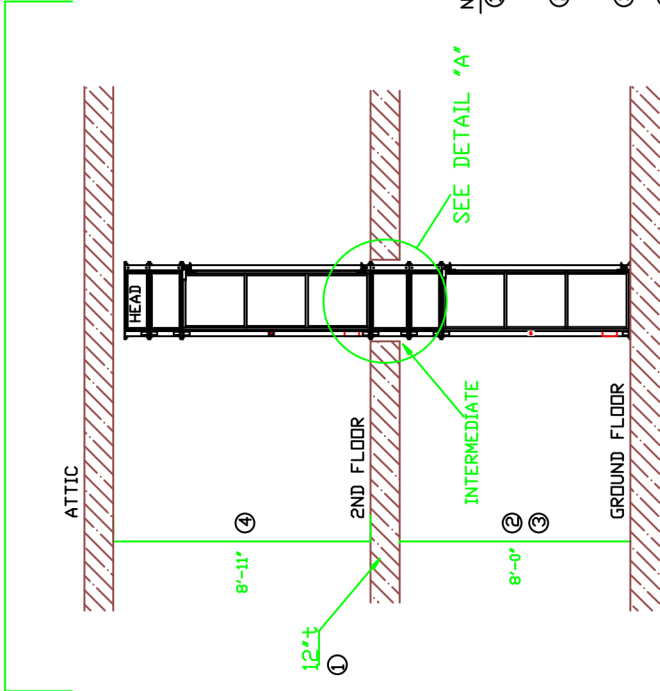
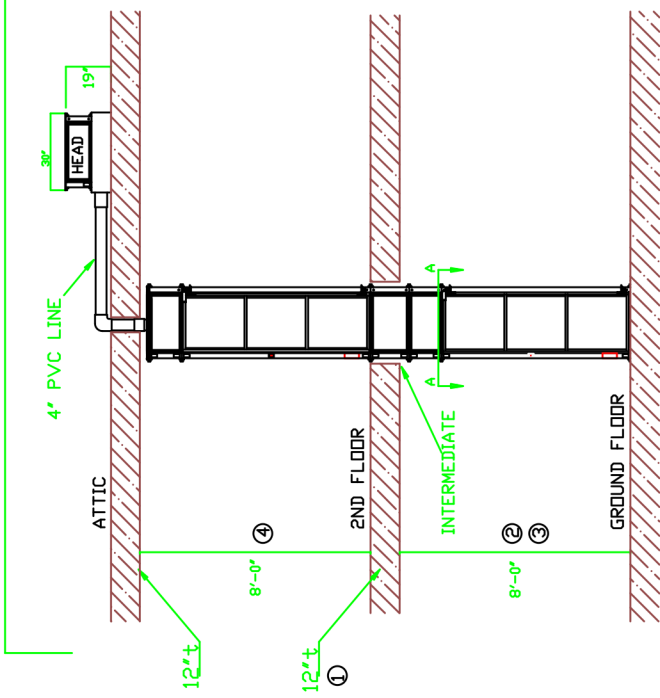


2 stop

TYPICAL SETUP



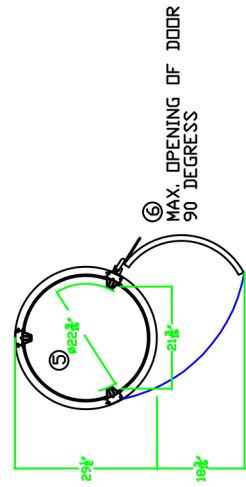
OPTION: REMOTE LOCATION OF HEAD UNIT



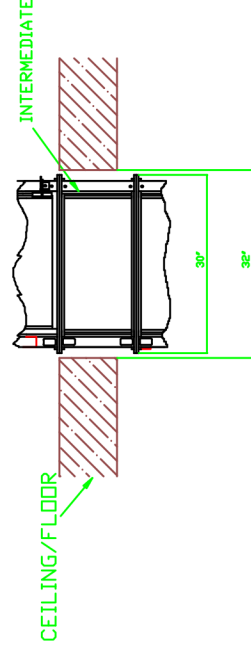
NOTE:

- ① INTERMEDIATE CYLINDER IS CUSTOM MADE AS FLOOR THICKNESS MAY VARY FROM HOME TO HOME.
- ② INTERMEDIATE CYLINDER IS CUSTOM MADE AS ROOM HEIGHT MAY VARY FROM HOME TO HOME.
- ③ MINIMUM ALLOWABLE HEIGHT IS 7'-9"
- ④ MINIMUM ALLOWABLE HEIGHT AS SHOWN FOR THIS TYPE OF INSTALLATION
- ⑤ INTERNAL DIAMETER OF CABIN WITHOUT THE COLUMNS IS 25 3/4" AND THE INTERNAL CABIN HEIGHT IS 6'-5"
- ⑥ DOOR WIDTH IS 26 3/4"
- ⑦ MAX. ELEVATOR HEIGHT IS 35'

VIEW 'A-A'  
SCALE 2:1



DETAIL 'A'  
(TYPICAL OF FLOOR PENETRATION)



Information contained herein is the property of Pneumatic Vacuum Elevators LLC. No reproduction or disclosure of this information may be made by the recipient to any person or organization without the written consent of Pneumatic Vacuum Elevators LLC.

Item Ref.	Quantity	Material	Dimensions	Article No./ Reference
				TYPICAL HOME INSTALLATION FOR A 2STOP ELEVATOR
			Designed by HS	Scale 1:1
			Drawing No. D-30-3CYL2	Rev 0
			Date	04/10/12

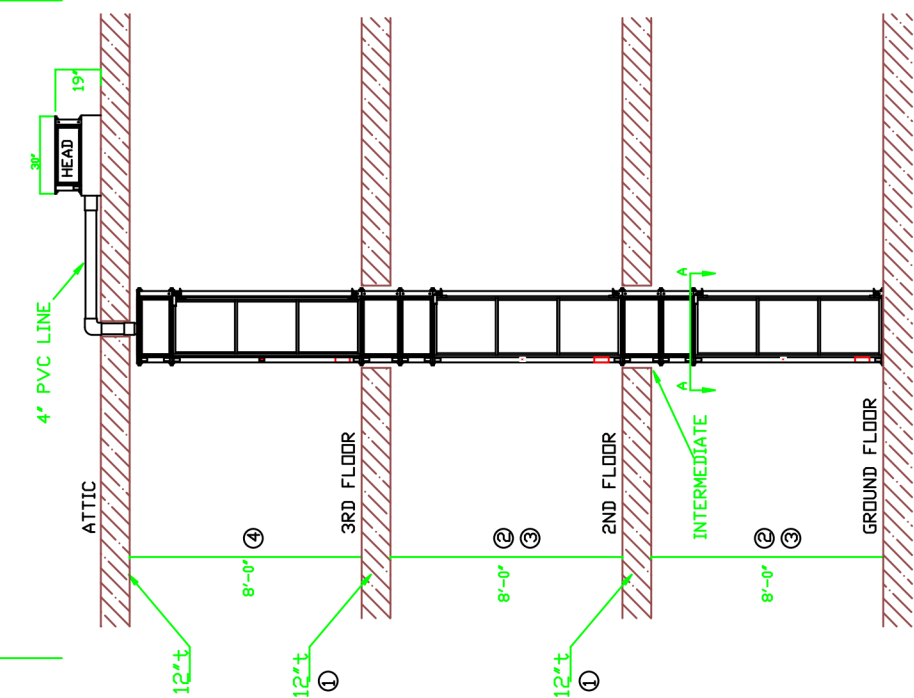
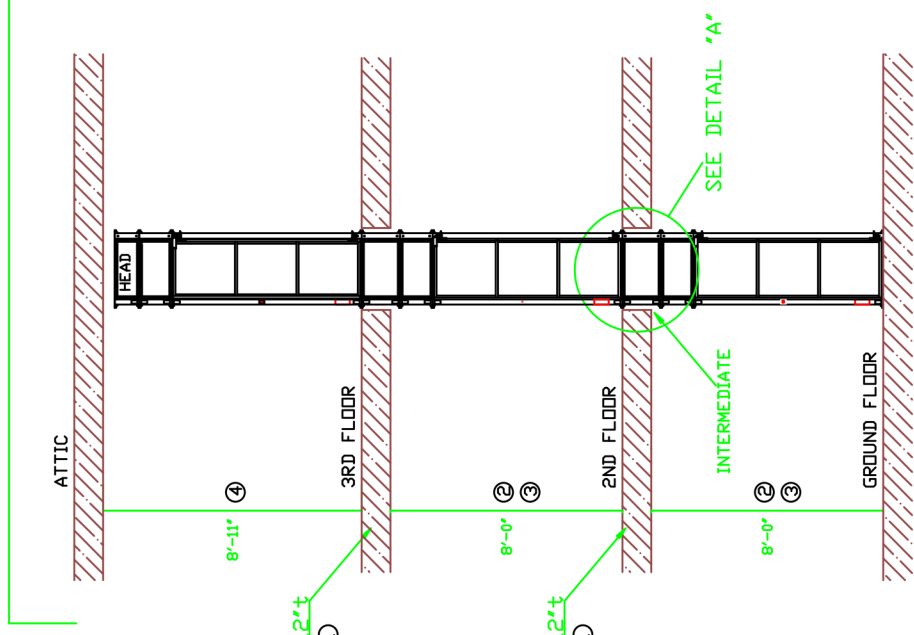
PNEUMATIC VACUUM ELEVATORS LLC



# 3 Stop

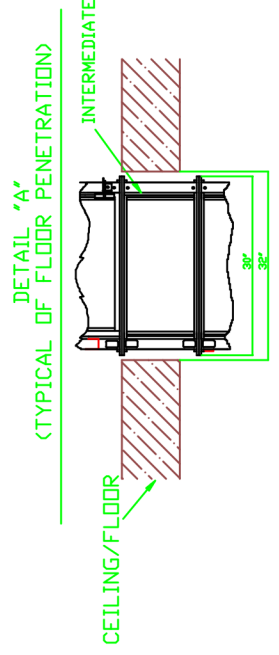
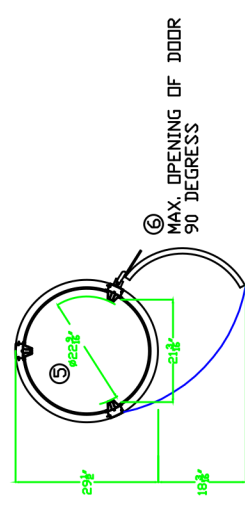
## TYPICAL SETUP

## OPTION: REMOTE LOCATION OF HEAD UNIT



- NOTE:
- ① INTERMEDIATE CYLINDER IS CUSTOM MADE AS FLOOR THICKNESS MAY VARY FROM HOME TO HOME.
  - ② INTERMEDIATE CYLINDER IS CUSTOM MADE AS ROOM HEIGHT MAY VARY FROM HOME TO HOME.
  - ③ MINIMUM ALLOWABLE HEIGHT IS 7'-9"
  - ④ MINIMUM ALLOWABLE HEIGHT AS SHOWN FOR THIS TYPE OF INSTALLATION
  - ⑤ INTERNAL DIAMETER OF CABIN WITHOUT THE COLUMNS IS 25 3/4" AND THE INTERNAL CABIN HEIGHT IS 6'-5"
  - ⑥ DOOR WIDTH IS 26 3/4"
  - ⑦ MAX. ELEVATOR HEIGHT IS 35'

VIEW "A-A"  
SCALE 2:1



Information contained herein is the property of Pneumatic Vacuum Elevators, LLC. No reproduction or disclosure of this information may be made by the recipient to any person or organization without the written consent of Pneumatic Vacuum Elevators, LLC.

 <b>PNEUMATIC VACUUM ELEVATORS LLC</b>	<b>TYPICAL HOME INSTALLATION FOR A 3STOP ELEVATOR</b>			
	Designed by	Scale	Drawing No.	Date
HS	1:1	D-30-3CYL3	0	04/10/12